

ACOUSTICHOC® A 40



Acoustichoc® A 40 offers a superior acoustic absorption and impact resistance, making it ideal for sport halls, schools and industrial facilities.

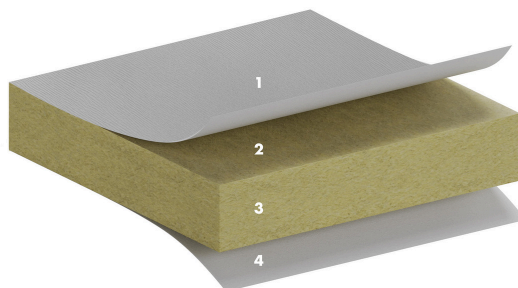


Acoustichoc® A 40



PANEL DESCRIPTION

1:	Decorative glass fiber veil in white or colors, reinforced with a glass grid
2:	High density stone wool panel, 40 mm thick
3:	A edges
4:	Natural glass veil on reverse side



TYPE OF APPLICATION

- Education

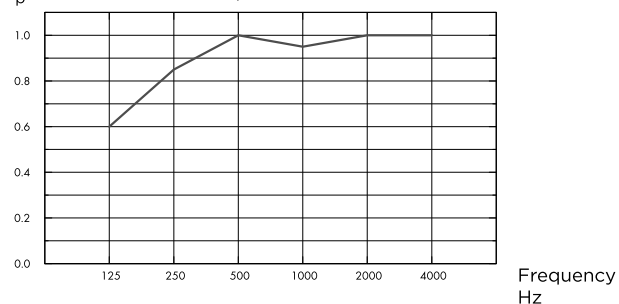


ACOUSTICS

Sound Absorption

Test results according to EN ISO 354. Classification according to EN ISO 11654.

α_p , Practical sound absorption coefficient



— Eurocoustic Acoustichoc® A40, 240 mm o.d.s.
o.d.s = overall depth of system

THK mm	o.d.s. mm	α_p , Practical sound absorption coefficient						α_w	Sound absorption class
		125 Hz	250 Hz	500 Hz	1000 Hz	2000 Hz	4000 Hz		
40	240	0.60	0.85	1.00	0.95	1.00	1.00	A	

THK mm	o.d.s. mm	NRC
40	240	0.95



FIRE REACTION

Standard	Class
EN 13501-1	A2-s1,d0



FIRE RESISTANCE

See respective classification reports for detailed information on installation and suspension system requirements.

Standard	Classification	Size	Load-bearing structures	Additional insulation
EN 13501-2	REI 30	600x600x40	Concrete, Steel	-
EN 13501-2	REI 30	600x600x40	Concrete, Steel, Timber	160 mm Euroène® 603
NBN 713-020	SF 30	600 to 1200 x 600x40	Concrete, Steel	-
NBN 713-020	SF 30	600 to 1200 x 600x40	Concrete, Steel, Timber	160 mm Euroène® 603



HUMIDITY RESISTANCE

100% flat irrespective of the Relative Humidity.



INDOOR AIR QUALITY

Certificate / Label	
French VOC	A+



MATERIAL HEALTH

EUCEB	Eurocoustic panels are manufactured using mineral wool certified by the European Certification Board for mineral wool products (EUCEB), which independently confirms that mineral wool is produced in conformity with the Note Q of European Regulation (EC) No 1272/2008 and therefore classification as a carcinogen does not apply.
REACH	Eurocoustic products comply with the REACH regulation of the European Chemicals Agency and therefore do not contain any Substances of Very High Concern (SVHC) with potential negative impacts on human health or the environment above 100ppm.



CARBON FOOTPRINT

Life cycle stages A1 to C4 of the EPD, in compliance with ISO 14025 / EN 15804.

	kg CO ₂ equiv/m ²
Acoustichoc A 40	6.56



CIRCULARITY

Minimum recycled content	26%
Recyclability	Fully recyclable



CLEANABILITY

The ceiling surface does not retain dust, which makes the panels easier to clean. The ceiling can be cleaned using a light brush or a vacuum cleaner. This type of cleaning will help extend the service life of the ceilings.



INSTALLATION

- You are advised to ensure that air can circulate between the rooms and the plenum to balance the temperature and pressures on each side of the ceiling.
- Tiles can be cut with a craft knife without generating any noise or dust.
- The direction in which the panels should be installed is indicated on the back of the panels.
- Contact us if any mineral wool is to be laid in the plenum.



IMPACT RESISTANCE

Tested and classified 2A according EN 13964 - Annex D when installed with Quick-Lock® T24 grid system.

Product	Main Runner	Euroclips	Wall Spring
1200x600	cc 1200	4.2 / m ²	1 / perimeter tile
1500x1000	cc 1500	2 / m ²	1 / perimeter tile



THERMAL PROPERTIES

Thermal resistance R = 1.10 m²·K/W (EN 13162).



CE

Eurocoustic ceilings are CE marked according to the European harmonized standard EN13964:2014. CE marked construction products are covered by a Declaration of Performance (DOP) which enables customers and users to easily compare performance of products available on the European market.



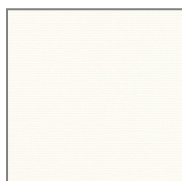
PRODUCT RANGE

Acoustichoc® A 40 ceilings are shrink-wrapped for protection. Pallets are wrapped in plastic film and must be stored under cover .

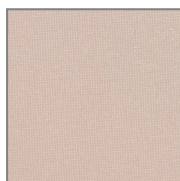
Format	1200x600	1500x1000
Edge	A	A
Grids	T24 - T35	T24 - T35
Panels/pack	10	4
m ² /pack	7.20	6.00
Packs/pallet	12	14
Service class	B	B

COLOURS AND DESIGN

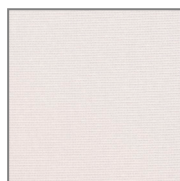
Colors



White



Calcaire D2



Chrome M2